

Cookie Permissions Checklist

TDWI.org requires cookies to be enabled in order to allow Members to log in successfully.

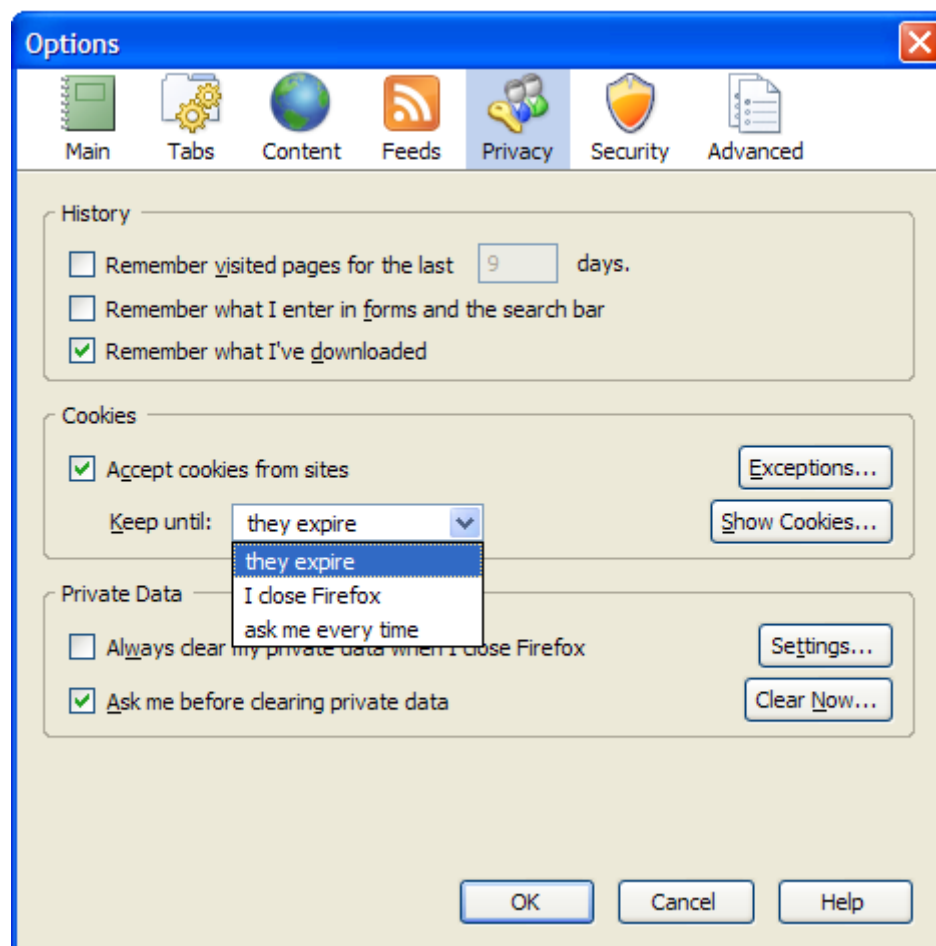
Here are instructions for configuring cookies for several different browsers.

1. Firefox

To enable cookies in **Firefox** version 2.0.x.x:

- In the menu bar, click on the **Tools** menu and select **Options**.
- In the screen below, select the **Privacy** tab.
- Make sure that “**Accept cookies from sites**” box is checked.
- Make sure that “**Keep until**” dropdown menu has “they expire” or “I close Firefox” selected. If the “ask me every time” option is selected, this can lead to user errors.

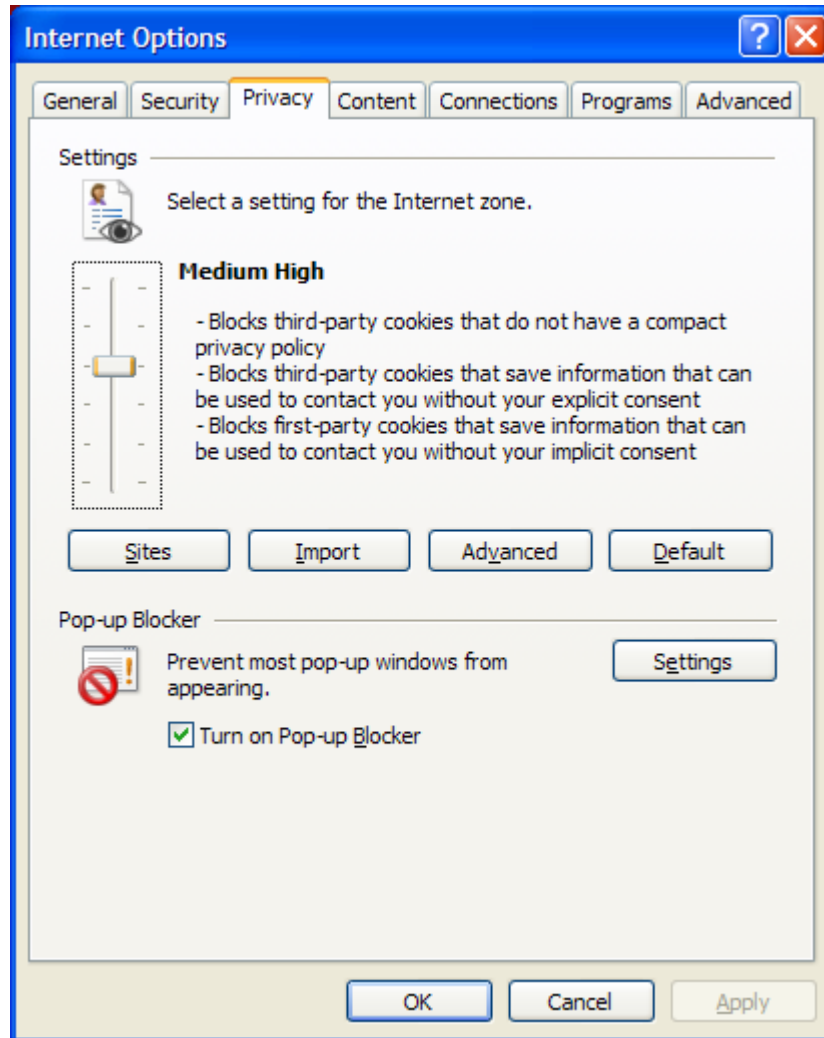
Click **OK** to save any changes.



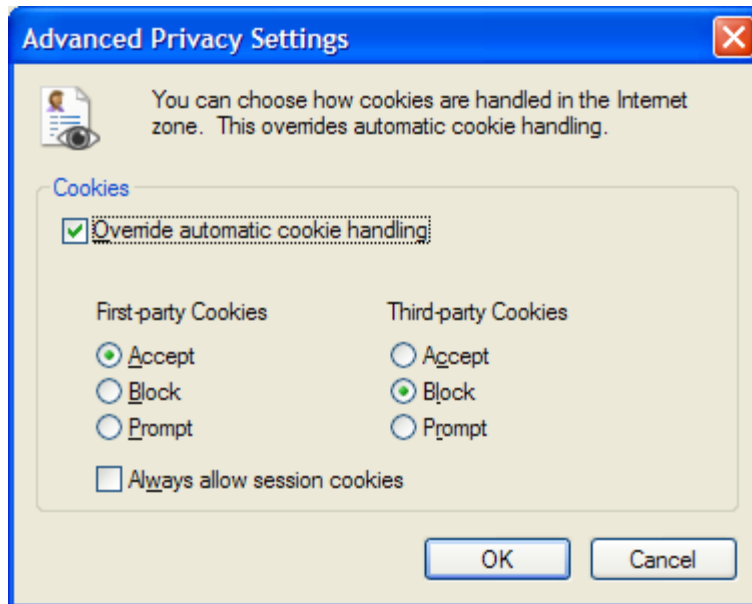
2. Internet Explorer

To enable cookies in **Internet Explorer** version 6.0 or 7.0:

- In the menu bar, click on the **Tools** menu and select **Internet Options**.
- In the screen below, select the **Privacy** tab.
- The maximum acceptable setting is **Medium High**. Any higher setting will prevent TDWI.org's login function from working properly.



Custom properties are accessible by clicking on the **Advanced** button.
In Advanced Privacy Settings, **First-party Cookies** must be set to **Accept**.



3. Safari

To enable cookies in **Safari** version 3.0.x:

- In the **Safari** menu, select **Preferences**.
- In the screen below, select the **Security** tab.
- Make sure that the **Accept Cookies** section has “**Always**” or “**Only from sites you navigate to**” selected.



4. Third-Party Software

If you have third-party software such as Internet security or a firewall, you may need to specifically allow access to www.tdwi.org.