



# Plug into the Power of Pelco

Video Security. Access Control. Power Conditioning.



Video systems and security solutions are rapidly changing and evolving, adapting to the latest technologies and demands of an ever-sophisticated marketplace. The question you need to ask yourself is:

## Are You Plugged In?

Pelco is leading the charge with the broadest array of video and security systems designed for the unique needs and demands at the heart of today's applications. From pure IP-based solutions to traditional technologies, Pelco has proven itself time and again with a reputation in the security industry second to none.

With unmatched leadership and experience in video security as a foundation, Pelco is able to deliver fully integrated security and access control solutions for any customer, in any market. Security is what we do and we do it better than anyone else.

It's time you get plugged in and experience it for yourself.



# Your Network. Our Solutions.

## Integrated Security You Can Count On

Network switches and routers. Ethernet and PoE. Bandwidth capabilities, compression algorithms, internal diagnostics. It's easy to get swept up in the windstorm of IT buzzwords. But when it comes to security, they are the last thing you need. Delivering today's fully integrated, IP-based security solution requires more than throwing around the latest clichés. It requires Digital Sentry, Endura and the entire suite of Pelco network-based security products.



## Digital Sentry Video Management Solutions

No matter where your video security system falls along the technology curve – analog, IP or anywhere in between – Digital Sentry is your solution. A complete digital video security system, Digital Sentry accommodates a virtually unlimited amount of cameras in multiple locations, all administered and operated from a remote station or over the Internet. Unlimited storage, unlimited cameras, unlimited frame rate all lead to unlimited possibilities.

Digital Sentry's pro-active video management system provides real-time, actionable information for your security professionals. With the addition of behavioral analysis and IP camera integration, Digital Sentry allows you to integrate cutting-edge technology with your existing legacy systems. Critical data captured by Digital Sentry can be monitored and managed from multiple locations – so the information that puts you in control of your security system is available when and where you need it.

Moreover, Digital Sentry software can operate on both Digital Sentry DVRs and Dell/HP servers, turning them into virtual NVRs with the click of a mouse. Through a single user interface, a user is able to monitor and manage all of the hardware devices in a system. Based upon an open architecture design, DS ControlPoint software supports third-party applications, video analytics and data transaction information.

## Endura Video Systems

Whether you are looking for a high-end, pure IP digital system, a sensible migration path from analog to digital, or a digital extension to an existing analog system, Endura delivers the image quality and robust performance demanded by security professionals. And IT professionals can rest assured that Endura offers the fault-tolerance, reliability and interoperability they expect from any piece of IT equipment. Designed for mission-critical performance that customers demand in an enterprise-class IP-based video security system, Endura is the platform on which to build the solution you need.



Digital Sentry



Endura Encoders



DVR5100 IP



Endura DVR5300

### An All-Digital Solution

The Endura IP video security system combines the video performance that customers demand with a robust, standards-based IT architecture. Endura delivers real time, high-quality video using a highly economical amount of your network's bandwidth. With only a small portion necessary to deliver the video you require, critical network resources remain available for the rest of your organization's needs. Reliability is built-in from end-to-end, from the Linux-based OS and RAID5 storage to full systemization of all components. And the Endura Certification program ensures that all installations and support are completed by highly trained professionals.

### The Best Path For Analog Matrix-to-Digital Migration

Customers can leverage their existing matrix switch investment with the Endura Matrix Digital Decoder. Transmitting video from the Endura system to the matrix switch, users can continue to use that which is familiar to view and control video on both the matrix system and the new Endura digital extension.



Intuitive Performance

### Enterprise-Class Digital Video Recording

For those applications that require a centralized enterprise-class digital video recording solution, the DVR5300 fits the bill, recording both analog and digital video and audio for up to 48 cameras.

### A Complete System

Most importantly, Endura is a fully integrated, comprehensive system in which all components deliver the quality and performance you demand.



Endura Mapping Interface

**Mapping** – Easy to configure and use, this application can receive and manage alarms from components, view video from cameras, push video onto monitors and control relays throughout the Endura IP video system.

**Wireless** – The Endura Wireless series of encoders and transmitters sets the standard for wireless video security applications, providing high-quality digital streams and instant diagnostics. Specifically designed for video applications, wireless capabilities offer Point-to-Point, Multipoint and Backhaul options.



Endura Wireless Encoder/Transmitter

**Intelligent Video & Analytics** – The Intelligent Encoder brings industry-leading analytics to a distributed platform, including Directional Motion; Adaptive Motion Detection; Vibration Removal; Object Removal; Camera Sabotage; Abandoned Object; and Object Counting.

**Gateway & Transcoders** – The Endura Gateway provides a connection between the Endura network and the open environment of corporate LANs, WANs and the Internet. Additionally, it provides Quad View with Live and Playback functionality from a Web browser. And the Endura Transcoder enables remote access for bandwidth-challenged connections.

## IP Camera Systems

With a growing line of IP-based cameras and positioning systems from the recognized industry leader, Pelco offers a solution to meet the demands of any application requirement. Having taken a measured approach to thoroughly understand the unique demands of video security over IP, Pelco offers a growing suite of technologies to bring the highest picture quality, best system responsiveness and overall control to your installation.

### Spectra IV IP - This Changes Everything

Building on the unparalleled success of traditional Spectra Camera Positioning Systems, Spectra IV IP is a true network-based camera system that delivers ultra-high performance in a high-speed dome. With all the features and functionality of the analog-only version, users can control and view video from a Spectra IV IP over a network from virtually anywhere in the world.

With Spectra IV IP's Web browser interface, users can monitor their systems with digital clarity at the touch of a mouse. In specialized applications, users can also realize the best of both worlds by being able to record via IP and monitor and control the domes locally via analog technology.

### Camclosure IP

Camclosure IP Integrated Camera Systems are powerful and flexible imaging systems built upon on an open architecture, enabling users to access and control high-quality video via a standard Web browser, as part of a Pelco enterprise-class Endura system or through third-party software.

With Camclosure IP users can simultaneously record, manage, configure and view three video streams. And Camclosure IP systems also come standard with built-in Power over Ethernet.

### IP3701 Network Cameras

IP3701 Series Color Network Cameras add value to existing IT and security investments. Similar to the Camclosure IP Series, IP3701 cameras can be viewed through a standard Web browser, Endura system or third-party software. Convenient Power over Ethernet makes IP3701 installation easy and cost effective. Extended Dynamic Range guarantees clear images in extreme lighting environments and the distinctive design is ideal for use in confined spaces.



Spectra IV IP



Camclosure IP



Choose from a Variety of Models and Lens Options



IP3701 Network Camera



Partnering for Success

### Pelco Development Partner Program

Pelco, the world's largest and most sought after video security manufacturer, is proud to offer IP camera systems built upon an open architecture. These powerful systems allow for seamless third-party integration with the Pelco Application Programming Interface (API). This unique tool is available today, free of charge, through our Development Partner Program.

The Pelco Development Partner Program provides unparalleled support to members who are integrating Pelco IP camera systems into third-party applications. Individuals who belong to the Pelco Development Partner Program have access to technical information and development support designed exclusively for our partners.

## Recording, Video Management & Access Control

### DVR5100

Plan with the future in mind with the new DVR5100. While analog cameras continue to play a significant role in many security installations, the evolution toward network camera systems is here. The hybrid functionality of the DVR5100 essentially gives users two DVRs for the price of one.

Delivering high-performance and enterprise-class recording at an economical price, the DVR5100 shatters performance marks for any DVR in its class. These systems support up to 20 cameras, delivering real-time recording on each channel and capture detail at frame rates previously reserved for much more expensive DVRs.

### Intelli-M Access Control

The IP-based Intelli-M Access Control System is the ideal method for deploying a cost-effective and specific solution to maintain the security of your property. Because Intelli-M is an IP-based access control product, the result is an intelligent, flexible and scalable solution for access control and alarm monitoring for anywhere from one to 32 doors or access points.

Among the first to take advantage of PoE technology, Intelli-M's eIDC Ethernet-enabled integrated door controller plugs in to any existing Ethernet network using CAT 5e or CAT 6 cable. The result is the ability to run power and data on a single cable, eliminating the need for a local power supply. Coupled with its compact size, Intelli-M is the answer for more efficient and cost-effective installations with reduced capital expenditures.



The Ultimate IP/Analog Recorder



Intelli-M Access Control



Ideal for Installations up to 32 Doors

# Your Opportunities. Our Experience.

## Innovative Solutions You Can Count On

As the leading video security solutions provider for more than two decades, Pelco has set the benchmark for innovative and reliable technologies – for any market, industry or application. From an unparalleled selection of fixed and positioning camera systems to digital video recorders, video transmission systems, matrix switches, viewing solutions and more, no other company can even come close to delivering to you the solutions you demand.

### Positioning Systems

From protecting the world's most recognized landmarks to keeping tens of thousands of installations safe and secure, Pelco's line of camera positioning systems are called upon to deliver superior and reliable performance, versatility, unequaled video quality and much more.

#### Spectra IV

A cornerstone of security installations for over a decade, the Spectra IV Camera/Dome Positioning System continues to set the industry standard for innovation and performance with a truly modular design. Offering a choice of five optics packages, the flagship Spectra IV SE Dome Positioning System takes the business of image capture to a whole new level.

With an industry-defining 35x optical zoom lens, 540 TV lines of resolution and an amazingly low 0.00018 lux sensitivity, Spectra IV is focused on delivering the crispest, most-detailed video possible.

#### Spectra Mini

Proving great things can come in the smallest of packages, Spectra Mini offers functionality and performance that far exceed anything else available. Fitting in the palm of your hand, Spectra Mini is a true positioning system with many of the features found in larger models.

Best of all, users can mix and match Spectra Mini indoor systems with larger, more powerful outdoor Spectra systems and the result is a cost-effective, high-performance video security solution that perfectly meets application needs.

#### Esprit

Designed and built for continuous duty, Esprit offers the most dynamic movement capabilities available, along with load-bearing and wind resistant capabilities that allow it to remain completely operational in 90 mile-per-hour wind conditions. Esprit can accelerate and decelerate more quickly, more responsively and more accurately than any other pan-and-tilt system.



Spectra IV Camera Positioning System



Small Form Factor Spectra Mini



Esprit Integrated Positioning System



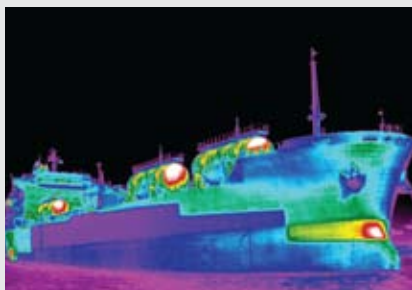
Esprit Thermal Imaging Camera System

And because it is obvious where the camera is pointing, it is a great deterrent for security applications.

The recently introduced Esprit 35x Integrated Optics Package enables users to extend the power and reach of their installation as never before. Featuring Electronic Image Stabilization, 540 TV lines of resolution, and an amazingly low 0.00018 lux sensitivity, Esprit 35x continues the tradition of performance established by the industry's most popular positioning system.

### Esprit Ti

The single-addressable, fully integrated Esprit Ti system provides a cost-effective thermal imaging solution, enabling users to easily add a thermal imaging capability to existing or new security system infrastructures. Ideal for commercial, industrial and law enforcement applications, Esprit Ti allows security personnel to detect threats (through smoke, fog, rain or total darkness) without “highlighting” the very assets that need protection.



Esprit Ti Sees What Others Miss

### ExSite

The Pelco ExSite family is an explosionproof PTZ system that has been designed for maximum performance in the most demanding, hazardous-location video security applications. Designed to protect the world's critical infrastructures, every system is an easy-to-install, pre-tested and pre-configured package, making it the first complete, plug-and-play system designed for extreme applications.



ExSite for Explosionproof Security

## Fixed Cameras

Pelco offers a truly impressive array of cameras and professional imaging products for the video security industry. From standard-featured compact cameras to those featuring advanced day/night, wide dynamic range capabilities, Pelco offers state-of-the-art technologies that meet the requirements of the most simple as well as the most demanding applications. Look to Pelco for cameras featuring DSS (Digital Slow Shutter) Day/Night High-Resolution, Day/Night Wide Dynamic Range as well as economical compact and general purpose options.

Our broad selection of fixed cameras integrates the industry's leading camera technologies. Many of Pelco's fixed cameras include built-in Unshielded Twisted Pair (UTP) transmitters, integrated mount connections and unique camera set-up tools. Whatever the application, Pelco cameras are designed to make every installation a clear success.



C10 Series Fixed Camera

For the most complete array of fixed cameras, Pelco offers a selection guaranteed to meet the demands of any installation. From the fully integrated Camclosure camera system to the latest C10 Series cameras and other high-quality choices, Pelco has developed a wide range of offerings.

### Camclosure IS

Integrating a camera, lens and enclosure into a discreet, compact package, the Camclosure IS Series brings together all the elements needed for a typical, fixed indoor or outdoor security installation. These attractive systems offer a variety of options with a whole host of features that make every Camclosure fast and easy to install. Weather and vandal resistant, they also provide that additional protection – and peace of mind – demanded by many of today’s installations.



Camclosure IS Integrated Camera System

## Digital Video Recorders

### DX8100 Digital Video Recorders

Security professionals demand reliable performance, innovative functionality and easy operation from their digital video recorders. It is, therefore, easy to see why Pelco DX8100 systems are the choice for professional security. Since 2003 this family of DVRs has led the industry with exceptional image quality, immense storage capacity and server-to-server connectivity. Now Pelco is proud to announce the latest evolution of this powerful system, the DX8100 v.1.2 DVR.



DX8100 Digital Video Recorder

The new Pelco DX8100 v.1.2 DVR combines market-leading capabilities with the rich legacy of features that has made DX8100 systems a top seller and industry favorite. Now more than ever, DX8100 v.1.2 systems meet the most demanding video security recording requirements by offering such enhancements as expanded video display options; enhanced ATM/POS support; system health check monitoring, and more.

### DX4500/4600 Digital Video Recorders

Affordable and easy to use, these entry-level digital video recorders eliminate the need for the traditional VCR/multiplexer/matrix combination. Offering four-, eight- and sixteen-channel models with internal storage capacity of up to 3TB, these digital video recorders are designed to guard your business while protecting your bottom line.



DX4600 Series DVR

## Viewing Solutions

### Public View Monitors

Pelco PublicView Monitors are a strong deterrent to would-be thieves, letting them know that your premises are protected by video security – at the same time welcoming customers and displaying promotional messages. Created specifically for security applications, each Pelco PublicView Monitor integrates a high-brightness, high-contrast LCD and a Wide Dynamic Range camera with a varifocal lens suited for the challenging lighting conditions of entrances and lobbies.



Pelco PublicView Monitor

The integrated memory card reader stores welcome messages, advertising, or other multimedia, while a built-in motion-detection feature switches between surveillance and messaging modes.



High-Quality Video Displays

### Monitors and Displays

Pelco offers a complete array of viewing solutions designed for the stringent demands of the video security professional. Whatever your space, budget, style or technology needs, Pelco has a solution for your application. From CRTs and LCDs to Plasma and DLP technology, Pelco viewing solutions are compatible with the complete line of Pelco video security systems, using the latest technology to deliver the exceptional performance you expect from the industry leader.



System 9770 Video Matrix

## Communication and Transmission Systems

### System 9770/9780 Large Matrix

The System 9770/9780 is a full-featured video matrix switching control system that allows users to view and control up to 4,096 cameras and 512 monitors on a single node. Expanded monitor capacity in the matrix bay allows implementation of larger systems with a smaller footprint (less hardware) than other matrix systems.

### PelcoFiber Ethernet/Audio

Today's security professionals are challenged by an ever-increasing number of installations beyond the reach of standard coaxial transmission capabilities. PelcoFiber technology helps meet these growing demands by utilizing the best transmission quality available over extended distances.



PelcoFiber

And now with PelcoFiber Ethernet Media Converters, users can leverage existing IP infrastructure for transmission of high-quality video and audio.

### X-Portal

Understanding the challenges of real-world applications, Pelco has developed a world-class interface with the integrator in mind. X-Portal transparently provides the gateway to Pelco solutions, enabling third parties to control connected Pelco products. X-Portal is an intuitive software tool that takes advantage of ActiveX and XML technologies to offer extraordinary capabilities.

## APC Power Conditioning

Because Pelco is serious about the security of your security systems, we offer bundles that include the APC line of power conditioning technologies. The end result is a new sense of reliability and lower total cost of ownership through the mitigation of the most common causes of failure.



Pelco and APC Bundled Solutions for Asset Protection

# Our Company

## Global Leaders in Video Security Systems

The right products are just the beginning. But when they are backed by the unparalleled support and service that only Pelco can deliver, success is yours for the taking. For more than 20 years, Pelco has earned its reputation by meeting and exceeding the needs of our customers. It is this attention to what matters most that has helped forge the long-term partnerships we are so proud to share.

### Get Plugged Into The Pelco Difference

It's distinctive. It's unique. It can even be overwhelming to those who are not used to it. It's the Pelco Difference.

It can't be reduced to a single product we make or a single service we offer. But at the very heart of the Pelco Difference is a culture that values quality over quantity, people before profit while placing an uncompromising dedication to our customers first and foremost in everything we do.

Put us to the test and experience The Difference yourself.

**Attitude** – It all starts with a relentless pursuit of and commitment to Fanatical Customer Service. Each and every person at Pelco will stop at nothing to ensure that our customers are completely satisfied each and every time. Ask anyone who has ever worked with us. Better yet, see for yourself. We look forward to building and continuing that relationship.

**Quality** – Stringent design, engineering and testing certifications ensure that your next Pelco purchase – whether the IP-based Endura System, a Spectra IV IP, a DX8100 Digital Video Recorder or any of our more than 5,500 products – will deliver the performance that you and your installation demand.

**Service** – From Guaranteed Ship Dates, One-Day Turnaround on all Service Repairs and Around-the-Clock Live Technical Support to Free Courses at the Pelco Global Training Institute, local product demonstrations aboard the Mobile Product Showcase and so much more, Pelco has established an impressive array of customer service programs to complement our industry-leading products and solutions.

**Support** – You're never on your own when you're with Pelco. Our network of Product Support professionals, Global Field Trainers, local Manufacturer's Sales Representatives and industry experts is available night and day to assist you in any way necessary.



Fanatical Customer Service



Seeing is Believing



Unmatched Quality and Service



*With offices and training, warehousing, service and distribution centers in more than 25 countries around the world, Pelco is uniquely positioned to deploy the necessary resources for the success of your next project. The recognized leader in video security systems and solutions, Pelco boasts the most comprehensive array of products, services and expertise available in today's marketplace. And now as a member of the Schneider Electric family, Pelco brings a network of assets backed by the strength of a Fortune 500 company to help you define and achieve your business objectives.*

[www.pelco.com](http://www.pelco.com)

Pelco Inc. Worldwide Headquarters 3500 Pelco Way Clovis, California 93612 USA  
(800) 289-9100 (800) 289-9150 Fax +1 (559) 292-1981 International +1 (559) 348-1120 International Fax

Worldwide Locations: Australia Canada Finland France Germany Italy Macau The Netherlands Russia  
Singapore South Africa Spain Sweden United Arab Emirates United Kingdom United States

Pelco and the Pelco logos are either trademarks or federally registered trademarks of Pelco. ©2008 Pelco.

C-4093B-03/08